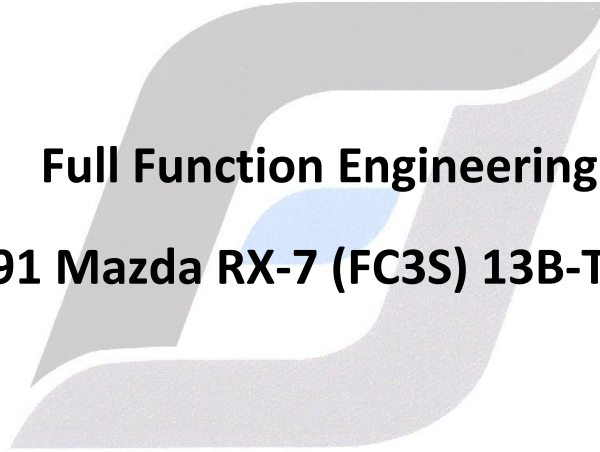


## **READ BEFORE INSTALLATION**



**Full Function Engineering**

**1986-1991 Mazda RX-7 (FC3S) 13B-T Fuel Rails**

**F U L L F U N C T I O N**

### **Notice of Performance**

Many of the parts that we sell are of a high performance nature and may cause additional stress on your vehicle. We cannot guarantee the integrity of your automobile. Full Function Engineering shall not be responsible for damages due to neglect or damages caused by products we sell. Some parts we sell are intended for off-highway use and may not be smog legal or D.O.T approved. Federal and State laws may prohibit use of said products on your vehicle; we recommend consulting your local authorities.

**Be safe during installation and use your head on the road.**

**Failure to comply CAN cause an engine fire.**

## **WARNING**

FFE rails are designed to be a perfect fit but require some attention to attain this.

Proper fitment is **YOUR** job to ensure.

(Full Function Engineering holds NO liability for improper install)

You should **NOT** have to tension the rail bolts to “snug” the injectors.

If your injectors will not rotate (with light force) or,

The spacers do not seat tightly between the rail and intake manifold/block,

**DO NOT PROCEED.**

The bolts should torque to the manufacturers recommended specifications with no gap between the spacer, rail and intake manifold.

These rails REQUIRE the removal of the plastic diffusers and associated spacers. Take precautionary steps when removing as they can break and fall into intake ports.

The provided spacers have a flat end which installs on the engine or intake manifold side. The protrusion inserts into the rail for alignment.

If you believe you received the incorrect fitment for your injectors or engine please refer to the bolt and spacer picture below and also our injector fitment guide on the website.

If you have questions, fitment issues or suggestions please contact us.

## Primary Rail, 48mm Fitment

13B-T (86-91)  
Primary Rail  
48mm Fitment



- 34mm injectors use a 14mm top adapter to make their overall height 48mm. (use metal clip to secure)
- The 34mm injectors require slight modification to seat properly; please see our Injector Fitment Guide for further instruction.
- The OEM primary fuel rail spacer (black plastic) is no longer required.

## Secondary Rail, 48mm Fitment

13B-T (86-91)  
Secondary Rail  
48mm Fitment



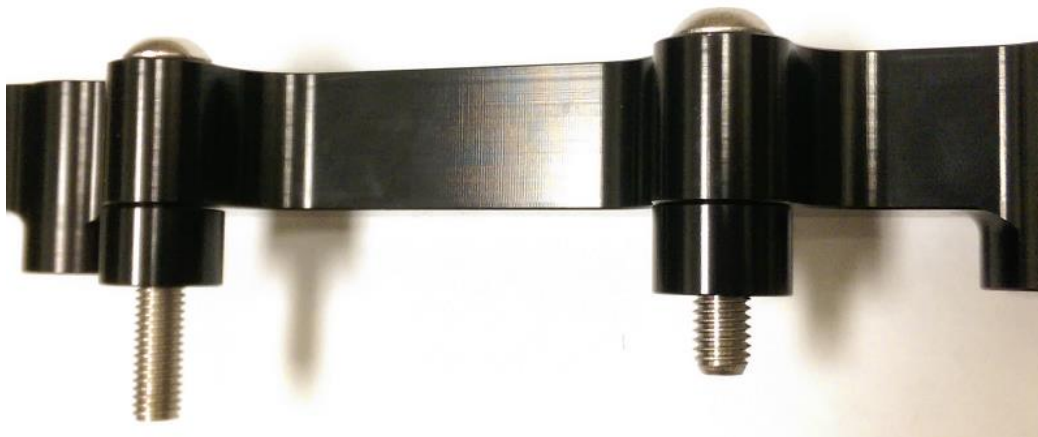
- 34mm injectors use a 14mm top adapter to make their overall height 48mm. (use metal clip to secure)
- The 34mm injectors require slight modification to seat properly; please see our Injector Fitment Guide for further instruction.
- The rear bolt hole requires the longer bolt.

### **Primary Rail, 60mm Fitment**



- The primary rail uses 12mm spacers to accommodate 60mm long injectors.
- The spacers sit between the rail and intermediate iron.

### **Secondary Rail, 60mm Fitment**



- The secondary rail uses 12mm spacers to accommodate 60mm long injectors.
- The spacers sit between the rail and intake manifold as pictured.